

New Creation Fellowship Church
 a member of Mennonite Church USA
 221 Muse Street Newton KS 67114
 Church office: 316.283.1363
 Website: www.newcreationnewton.com



New Creation Fellowship Church

February 12, 2023

INTERIM PASTORAL CARE STAFF:

Audrey Ratzlaff 316.619.4580 ncfnewton@gmail.com

OFFICE ASSISTANT:

Brenda Mays 316.283.1363 ncfcoffice.assistant@gmail.com



ADMINISTRATIVE TEAM CONTACT:

George Krievins 316-288-9432 jpkrievins@me.com

CONGREGATIONAL CARE TEAM CONTACT:

Krista Murray 620.217.9037 kmurray62@gmail.com

LEADERSHIP and CONGREGATION RELATIONS TEAM:

John Murray 620.951.0115 johnm327@gmail.com

Leia Lawrence 620.245.8538 LM8Lawrence@gmail.com

Carmina Suter 316.288.9188 carminasuter@gmail.com

At New Creation we seek to celebrate our differences as gifts and blessings - our differences in color, gender, sexual orientation, and the many other ways we are categorized by the world. You are welcome in this place as we journey together, discerning how to follow Jesus more faithfully.

PRAYER requests

Western District Conference: Pray for WDC chaplains, pastors and congregational care teams who offer support to church and community members living with mental, emotional, and physical health challenges.

Mennonite Mission Network: Christy Harrison and Peter Sensenig and their three children are engaged in ministry in Chad, jointly serving with Eastern Mennonite Missions (EMM) and MMN. Pray for them as they share Jesus' love in their daily lives — Peter, as he teaches at Shalom Faculty of Evangelical Theology; Christy, as she works at a hospital; and their children, as they interact with classmates and neighbors.

Opening Song: When We Walk with the Lord.....VT 570

Welcome and Announcements..... Megan Thompson

Meditative Music and Lighting the Peace Lamp

Open My Eyes That I May See.....VT 738

Scripture Reading Ephesians 5:21-33
 NIV and Inclusive translations

I know God Loves MeVT 158

We Are Often Tossed and Driven.....VT 311

Offering

Children's Time..... Kristin Neufeld Epp

Teaching..... Renee Reimer
A Troubling Form of Love

Sharing and Praying Together..... "O God, hear us"

Closing Song: What Does the Lord Require of You?....VT 207

Benediction Renee Reimer

Contributions Feb 5: General Fund: \$3978 Jr Youth Fund: \$150

	February 12	February 19
Worship leader	Megan T	Megan T
Song leader	Melodie T	Vicki L & Melodie T
Musicians	Rhonda H & Michelle V	Krista M
Sound & video	Jair H & Micah H	Andy B and Aaron R
Children's time	Kristin NE	Kristin NE
Speaker	Renee R	Mitch S
Care of building	Bernard & Evie R	Ruth & Steve M

NCFC COVID TRIAL POLICY

After prayerful discernment, the Administration Team approved the following mask use statement effective February 12, 2023:

"Because at New Creation Fellowship Church, during this time of COVID, we work to be a congregation that welcomes people who are immunocompromised, who hold anxiety because of pandemic health, or are disabled, and because we are aware of inequalities present in our healthcare system, we are mindful in our practice of masking and we recommend that you join us in this practice."

Trial Period to last from 2/12/23 to 4/30/23:

1. Administration Team will reassess at the end of the trial.
2. Congregational meeting - April 16, 2023 to gather input from the congregation on the decision-making process.
3. Stay home when you are feeling unwell.
4. If you test positive for COVID within 10 days of attending NCFC Sunday worship, please inform Brenda. Brenda will send out an email to the congregation letting them know of the possible exposure without giving your name unless you expressly give her permission to do so.
5. The trial applies only to gatherings in the Sanctuary. A masking plan for other gatherings will be decided by those involved.
6. Administration team will monitor CDC data for Harvey County on a weekly basis and make adjustments to the plan as needed.

If you have questions, please contact the Admin Team (Michelle, George and Megan T.

The focus of our worship on **Feb.19th** will be **accessibility**. We will be dedicating our new accessibility lift and Mitch S will be preaching. His scripture passages will be Exodus 4:10-11, Luke 6:6-11 and John 5:1-9 and he will explore how in these narratives how does God use persons with disabilities? How are persons who are disabled a part of the transformation of communities? In the biblical narrative, who or what is really being transformed?

The Introductory meeting for **NCFC's Anabaptism at 500 Bible Study** group will be Thursday Feb 16 at 7pm. If you are interested in joining, please contact Audrey ASAP to get a Participant's Guide.

Our **Ash Wednesday Service** will be Feb 22 at 7:00 pm. You are welcome to come to the sanctuary or join us on Zoom. Audrey will lead this service.



Update from the **Search Committee**: First of all, thank you for all of your support in the pastoral search process so far! We greatly appreciated all the feedback we received as we pulled together information for the different documents. We now have those documents completed and have submitted them to Western District Conference. Once they are reviewed, the job will be posted and potential candidates can start to apply! Please continue to pray for wisdom and God's leading in this process. If you have any suggestions on potential candidates, please contact our Conference Minister, Heidi Regier Kreider, directly at heidirk@mennowdc.org

Bethel College Concert Choir *Tour Send-off* Concert, directed by Dr. Henry Waters will be on Sun., Feb. 26 at 7 p.m., in Memorial Hall. Stephany M and Edel M will be singing in the choir.

Kansa Mennonite Relief Sale: Our church is raising funds for biodegradable paper goods for the KMRS in April. Pledges can be given to Rhonda H or cash/checks can be made out to NCFC with designation they are for the sale. The money is needed by the end of March. Thanks for considering a donation to support this cause.

Everence® will hold an informative Social Security and retirement income webinar on Thursday, Feb. 23, starting at 6:30 p.m. Specifics will include, Social Security strategies, including when to begin taking benefits, risks that can impact your retirement savings plus strategies to help your income last throughout retirement. Information will be presented by staff from the Everence offices in Central Kansas. To register contact Everence at 316-283-3800, 877-467-7294 or central.kansas@everence.com.



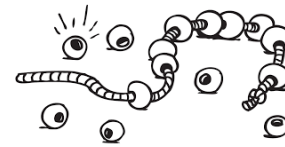
EARTHQUAKE Türkiye & Syria

Your help is needed to support people affected by the devastating quake in Türkiye and Syria.

MCC is responding with partners in northwestern Syria after the deadly quake. Your gift will provide essential food and hygiene items, emergency shelter and trauma counseling.

mcc.org/earthquake

DONATE TODAY



New Creation Preschool: We want your broken necklaces and extra beads. We hide the beads in the rocks on the playground. The children LOVE to hunt for treasure.

Camp Mennoscah **[Interviews for Summer Staff In Progress!](#)** We are seeking stunning summer staff to fill the following leadership positions for the 2023 summer: crafts, lifeguard, music, nature, office, and grounds. These positions are typically filled by college-age students, are summer-long and receive a stipend. Lifeguards and grounds are especially needed. It's a summer of fun, service and faith formation!

Spring Musical at Hesston College Performing Arts will present the musical *The Apple Tree* by Bock and Harnick, the same duo that wrote *Fiddler on the Roof*, in the Black Box Theater in Keim Center March 1 to 5. *The Apple Tree* is a series of three musical playlets - *The Diary of Adam & Eve*, *The Lady or the Tiger*, *Passionella*. Learn more at hesston.edu/fine-arts.

First Mennonite Church of Halstead invites you to their annual [Verenike Supper Fundraiser](#) on February 25 at their church building 427 W 4th. The menu will be verenike, ham gravy, zweiback, green beans, sausage, and pie. There is a Drive-thru/Carryout option from 4-5pm on the west side of the church and a Dine-in option from 5-7pm in the fellowship hall. Proceeds will go towards local missions projects.

Newton Et Cetera Shop is hosting a **Women's Clothing Extravaganza Feb. 16-18!** We have an overflow of clothing donations, thanks to our generous donors, and want to pass along the generosity to our customers. On the week of Valentine's Day, this event is a way for us to show our love for our community by sharing generously what we've been given, to show love for the earth by shopping second-hand and reducing our carbon footprint, and to show love for those in need by raising funds for our Local Giving grants and Mennonite Central Committee. During this special event, all women's clothing items in bins on the sales floor will be \$3 each. This includes women's tops, pants, skirts and dresses. The store is located at 619 N. Main St. in Newton. Special business hours for the event are **10-7 Thursday, Feb. 16, and their usual business hours 10-5:30 Friday, Feb. 17, and Saturday, Feb. 18.** Shoppers should note that because of the volume of clothing, the dressing rooms will not be available for this special sale. They will need to plan to try on items over their own clothing.

